

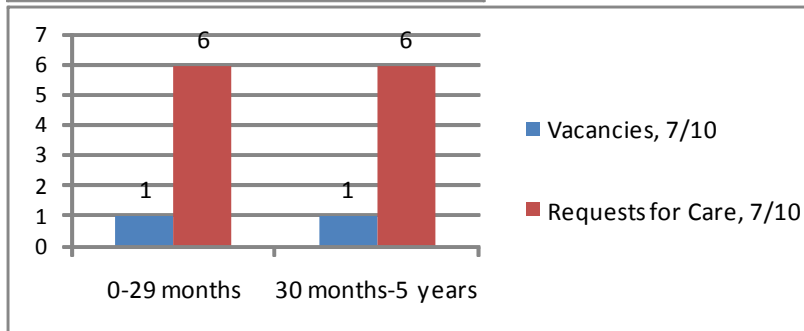
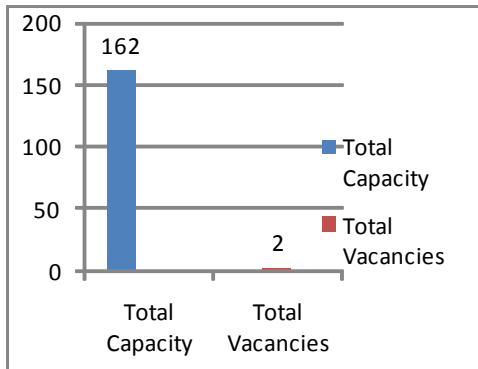
Ketchikan Working Parent Demographics

Number of Residents¹: 14070
 Number of children ages 0 through 5¹: 964
 Number of families¹: 3634
 Two parent families, both parents in the workforce¹: 677 (64%)

Ketchikan's Early Learning & Child Care Sector

Number of CDA's (Child Development Associate)²: 12
 Number of Nationally Accredited programs²: 1

Early Learning & Child Care Supply & Demand²



Cost of Education Comparison

One year of state college³: \$5,930 vs. One year of child care²: \$7,374
 Pre-School program expulsion rates* 38%⁴ vs. High School non-graduation rate⁵, 26.7%
 *38% of early learning programs expelled a preschooler for behavior issues within a year.

Early Learning Provider Wage Comparison

Income of average Alaskan⁶: \$45,349 vs. Average annual income of Early Education and Child Care work (statewide)⁶: \$22,942

Child Care Resource & Referral (AEYC/thread)

Number of child care referrals provided annually²: 91

REFERENCES

- 2008 Ketchikan census data, http://labor.alaska.gov/research/alari/Profiles/5_13_0.PDF
- AEYC and thread services (Assoc. for the Education of Young Children-SE Alaska) Resource & Referral Program
- The national column contains the average cost for public college tuition and fees for a four-year institution from the College Board, Trends in College Pricing, 2009
- 2006 SOA Early Childhood Comprehensive Systems Plan, <http://www.hss.state.ak.us/ocs/childplan/ECCSFULLChildPlan.pdf>
- http://www.eed.alaska.gov/DOE_Rolodex/schools/ReportCard/RCDetails0208.cfm?School_Number=250020%20&%20School_Year=200708
- <http://www.labor.state.ak.us/research/wage/matrixcd.htm>



AEYC

Association for the Education
 of Young Children –SE Alaska
 3100 Channel Dr., Ste. 215N
 Juneau, AK 99801
 907.789.1235
www.aeyc-sea.org

